

PRODUCT INFORMATION PACKET

Model No: 254TTDR16028

Catalog No: U210A

15 HP Close-Coupled Pump Motor, 3 phase, 1800 RPM, 230/460 V, 254JPV Frame, ODP
JP Motors



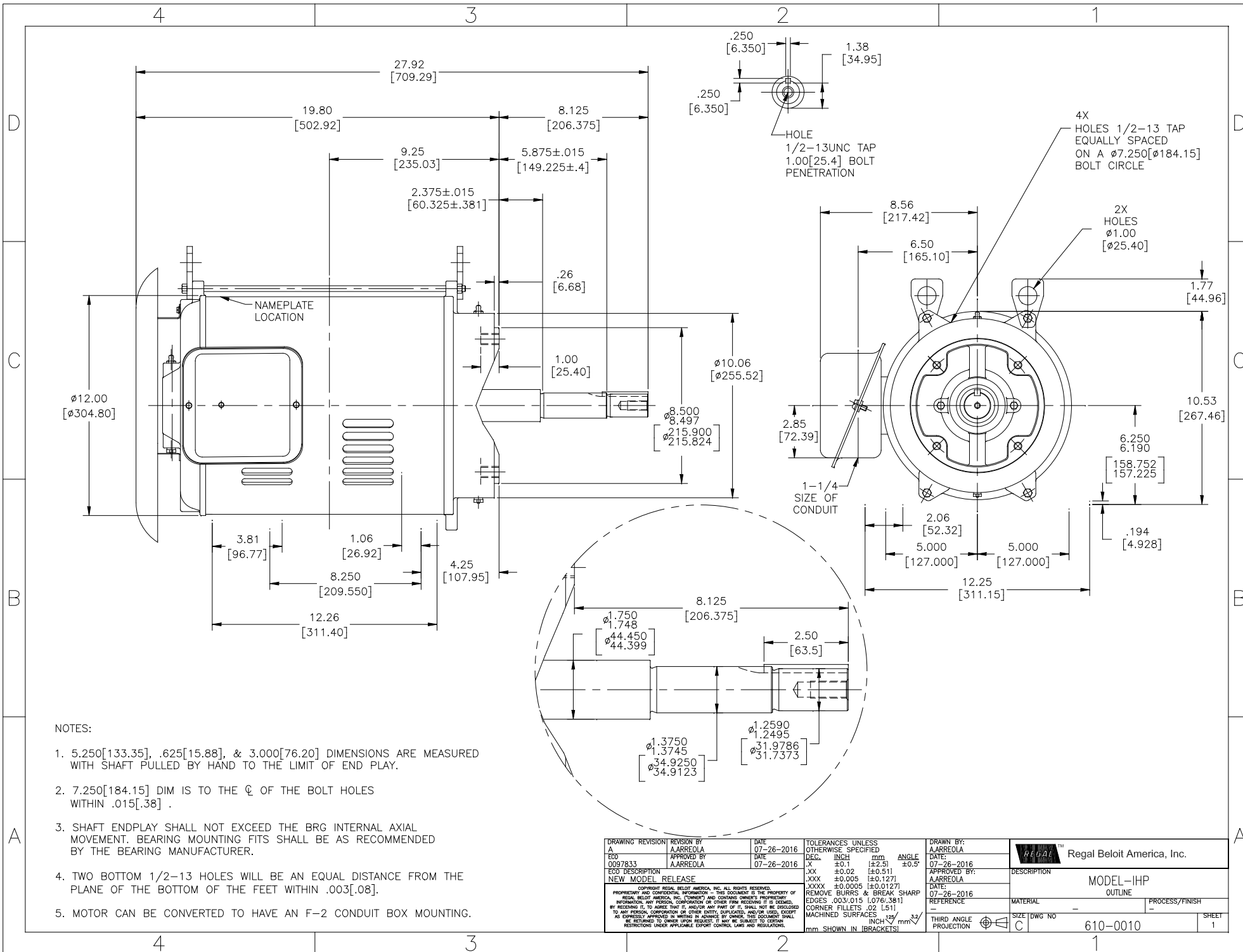
Nameplate Specifications

Output HP	15 Hp	Output KW	11.2 kW
Frequency	60/50 Hz	Voltage	230/460 V
Current	38.0/18.9 A	Speed	1768 rpm
Service Factor	1.15	Phase	3
Efficiency	93 %	Power Factor	79.9
Duty	Continuous	Insulation Class	F
Design Code	B	KVA Code	G
Frame	254JPV	Enclosure	Drip Proof
Thermal Protection	No	Ambient Temperature	40 °C
Drive End Bearing Size	6309	Opp Drive End Bearing Size	6207
UL	Recognized	CSA	Y
CE	Y	IP Code	12

Technical Specifications

Electrical Type	Squirrel Cage Induction Run	Starting Method	Across The Line
Poles	4	Rotation	Reversible
Resistance Main	.515 Ohms	Mounting	Round
Motor Orientation	Shaft Down	Drive End Bearing	Ball
Opp Drive End Bearing	Ball	Frame Material	Rolled Steel
Shaft Type	JP	Overall Length	27.92 in
Frame Length	13.00 in	Shaft Diameter	1.375 in
Shaft Extension	8.13 in	Assembly/Box Mounting	F1/F2 CAPABLE
Connection Drawing	80022801	Outline Drawing	610-0010-1300

This is an uncontrolled document once printed or downloaded and is subject to change without notice. Date Created:20/01/2021



NOTES:

- 5.250[133.35], .625[15.88], & 3.000[76.20] DIMENSIONS ARE MEASURED WITH SHAFT PULLED BY HAND TO THE LIMIT OF END PLAY.
- 7.250[184.15] DIM IS TO THE ϕ OF THE BOLT HOLES WITHIN .015[.38] .
- SHAFT ENDPLAY SHALL NOT EXCEED THE BRG INTERNAL AXIAL MOVEMENT. BEARING MOUNTING FITS SHALL BE AS RECOMMENDED BY THE BEARING MANUFACTURER.
- TWO BOTTOM 1/2-13 HOLES WILL BE AN EQUAL DISTANCE FROM THE PLANE OF THE BOTTOM OF THE FEET WITHIN .003[.08].
- MOTOR CAN BE CONVERTED TO HAVE AN F-2 CONDUIT BOX MOUNTING.

DRAWING REVISION/REVISION BY A AARREOLA		DATE 07-26-2016	TOLERANCES UNLESS OTHERWISE SPECIFIED		DRAWN BY: AARREOLA		Regal Beloit America, Inc.	
ECO 0097833		DATE 07-26-2016	DEC.	INCH	mm	ANGLE	DATE: 07-26-2016	DESCRIPTION MODEL-IHP OUTLINE
ECO DESCRIPTION NEW MODEL RELEASE			X	±0.1	[±2.5]	±0.5°	APPROVED BY: AARREOLA	
<small> PROPRIETARY AND CONFIDENTIAL INFORMATION - THIS DOCUMENT IS THE PROPERTY OF REGAL BELOIT AMERICA, INC. ("OWNER") AND CONTAINS OWNER'S PROPRIETARY INFORMATION. ANY REPRODUCTION, COPIATION OR OTHER FORM RECEIVED BY YOU IS LIMITED TO YOUR USE ONLY. BY RECEIVING IT, YOU AGREE THAT IT, AND/OR ANY PART OF IT, SHALL NOT BE DISCLOSED TO ANY PERSON, CORPORATION OR OTHER ENTITY, SUPPLIER, AND/OR USER, EXCEPT AS EXPRESSLY APPROVED IN WRITING BY OWNER. THIS DOCUMENT SHALL BE RETURNED TO OWNER UPON REQUEST. IT MAY BE SUBJECT TO CERTAIN RESTRICTIONS UNDER APPLICABLE EXPORT CONTROL LAWS AND REGULATIONS. </small>			XX	±0.02	[±0.51]		DATE: 07-26-2016	MATERIAL
			.XXX	±0.005	[±0.127]		REFERENCE	PROCESS/FINISH
			.XXXX	±0.0005	[±0.0127]		THIRD ANGLE PROJECTION	SIZE DWG NO 610-0010
			REMOVE BURRS & BREAK SHARP EDGES .003/015 [076/.381]				SHEET	1
			CORNER FILLETS .02 [.51]					
			MACHINED SURFACES					
			mm SHOWN IN BRACKETS					



P.O. BOX 8003
WAUSAU, WI 54401-8003
PH. 715-675-3311

DATA VOLTS: 460

CERTIFICATION DATA SHEET

CUSTOMER P.O. #:
 ORDER #: 80022801 REFERENCE MODEL #: 254TTDR16028
 CONN. DIAGRAM: 610-0010 CAT #: U210A
 WINDING: BGR4T01 NONE 3 CUSTOMER PART #:
 SPEED: MOUNTING: F1/F2 CAPABLE

TYPICAL MOTOR PERFORMANCE DATA

HP	KW	SYNC RPM	FL RPM	FRAME	ENCLOSURE	TYPE	KVA CODE	DESIGN	
15	11.2	1800	1768	254JPV	DP	TDR	G	B	
PH	HZ	VOLTS	AMPS	START TYPE	DUTY	INSL	S.F.	AMB	ELEV.
3	60/50	230/460#190/380	38/18.9& 38/19	ACROSS-THE LINE	CONT	F	1.15	40	3300
	F.L. EFF	93.0	3/4 LD EFF	93.2	1/2 LD EFF	92.7	GTD EFF	ELECT. TYPE	
	F.L. PF	79.9	3/4 LD PF	75.2	1/2 LD PF	66.0	91.7	SQ CAGE IND RUN	
F.L. TORQUE	LR AMPS @ 460 V	L.R. TORQUE	B.D. TORQUE	F.L. RISE (°C)					
44.5 LB-FT	114	84.1 LB-FT	189%	117 LB-FT	263%	21			
@ 3 FT.	POWER	ROTOR WK ²	MAX. LOAD WK ²	SAFE STALL TIME	START/SHOUR	MOTOR WGT			
999 DBA	1008 DBA	2.00 LB-FT ²	0 LB-FT ²	20 SEC.	2	0 LB.			

*** SUPPLEMENTAL INFORMATION ***

DE BRACKET TYPE	ODE BRACKET TYPE	MOUNT TYPE	MOTOR ORIENTATION	SEVERE DUTY	HAZARDOUS LOCATION	DRIP COVER	SCREENS	PAINT
C-FACE	STANDARD	ROUND	SHAFT DOWN	NO	NONE	YES	NONE	BLUE (ENAMEL)
BEARINGS	GREASE	SHAFT TYPE	SPECIAL DE	SPECIAL ODE	SHAFT	MATERIAL	FRAME MATERIAL	
DE BALL 6309	BALL 6207	POLYREX EM	JIP	NONE	1045 HOT ROLLED (C-204)	ROLLED STEEL		
THERMOSTATS	PROTECTORS	WDG RTD's	BRG RTD's	THERMISTORS	CONTROL	SPACE HEATERS		
NONE	NOT	NONE	NONE	NONE	FALSE	NA		
R1 (ohms/ph)	R2 (ohms/ph)	X1 (ohms/ph)	X2 (ohms/ph)	Xm (ohms/ph)	VIBRATION (in/sec)	FLOAT		
0	0	0	0	0	0.150	ODE		

* INVERTER TORQUE: NONE
 INV. HP SPEED RANGE: NONE
 ENCODER: NONE
 NONE
 NONE
 BRAKE: NONE
 NONE
 FT-LB: NA
 VOLTAGE: NONE
 NONE
 NONE PPR

PREPARED BY: FAREEDA DUDEKULA
 DATE: 9/17/2018
 FORM: 3531 REV 4 2/27/06
 UL: V-INS, CONST UL REC
 HZ:

